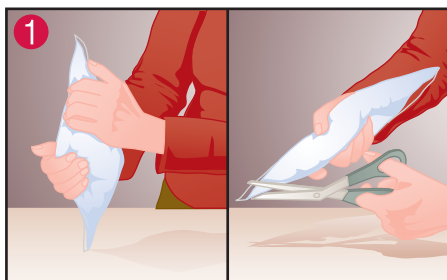


# Instructions



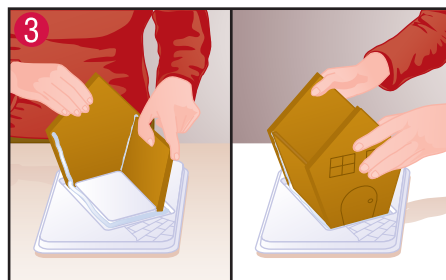
## 1. ICING BAG PREPARATION.

Knead / massage icing pouch for 1 minute to a soft smooth consistency (like a toothpaste texture). Cut ending at the end of each bag. Be sure not to cut the openings too large!



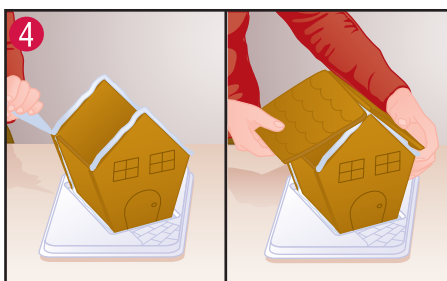
## 2. ARRANGE SANTA HOUSE PIECES FOR ASSEMBLY.

Lay out house pieces on table. Line the 4 canals of E-Z Build® Tray with a strip of icing. On the reverse (rough side) of front and back panels of house along the edges, pipe a thick line of icing.



## 3. ERECT WALLS.

Using E-Z Build® Tray, insert back panel of house into the canal, then press side wall up against icing strip on back panel. Repeat process with front panel and second side wall. Adjust walls to create a good rectangle prior to putting on roof pieces.



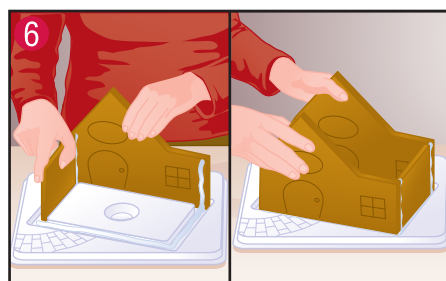
## 4. APPLY ICING TO HOUSE PEAKS, AND ADD ROOF.

Pipe a thick strip line of icing along roof edges of front and back panels. Attach roof panels to house peaks and hold in place for one minute. Then line a strip of icing down the middle of the house. Hold in place for another minute while icing sets. Wait for 15 minutes prior to decorating your house.



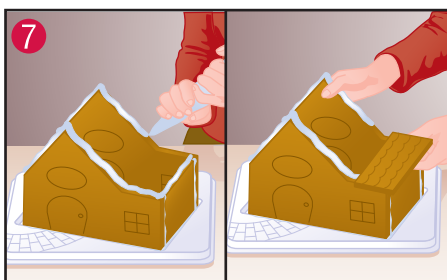
## 5. ARRANGE TOY SHOP PIECES FOR ASSEMBLY.

Lay out house pieces on table as shown. Line the 4 canals of E-Z Build® Tray with a strip of icing. Pipe a thick line of icing along the edges of the reverse (rough side) of the front panel and the embossed side of the back panel.



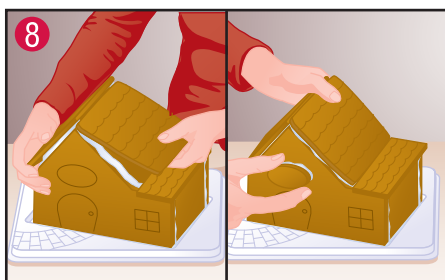
## 6. ERECT WALLS.

Using E-Z Build® Tray, insert the back panel of house into the canal (embossing should be facing inside the house) press side wall up against icing strip on back panel. Repeat the process adding the second side wall followed by the front panel. Adjust walls to create a good rectangle prior to putting on roof pieces.



## 7. APPLY ICING TO HOUSE, ADD ROOF SECTIONS.

Pipe a thick strip of icing along roof edges on front, back and side panels. Attach small side roof piece to right side of house. Place second roof section on the right side resting the bottom on the edge of the small roof piece. Tuck the left roof piece up under the right one and hold in place for one minute. Pipe a strip of icing down the middle of the roof. Hold in place for another minute while icing sets.



## 8. ATTACH SIGN

Add a small dab of icing to the back of the sign and attach to front of house. Let house sit for 15 minutes prior to decorating.



## 9. YOUR SANTA HOUSE AND TOYSHOP ARE READY TO DECORATE.

TELL US ABOUT YOUR SPECIAL GINGERBREAD HOUSE. SEND A PHOTO TOO!

EMAIL us at: [myhouse@createatreat.com](mailto:myhouse@createatreat.com) or WRITE to us: Create a Treat, 1555 Clark Blvd, Brampton, Ontario, Canada L6T 4G2. For more creative ideas visit our website: [www.createatreat.com](http://www.createatreat.com)